

1 Data Dashboard

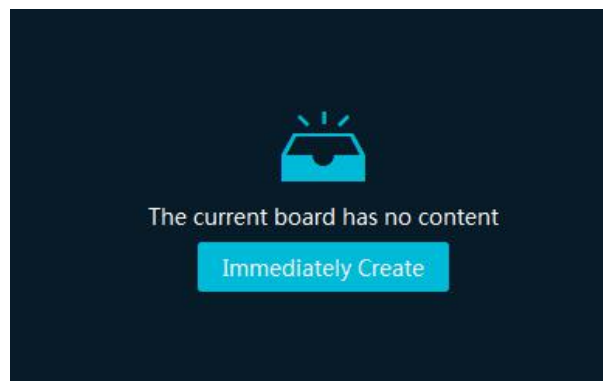
Before opening the data dashboard, please make sure the intelligent server is online.

Go to Home → Resource Management → Intelligent Analysis Server interface. There is a default intelligent server and make sure it is one.

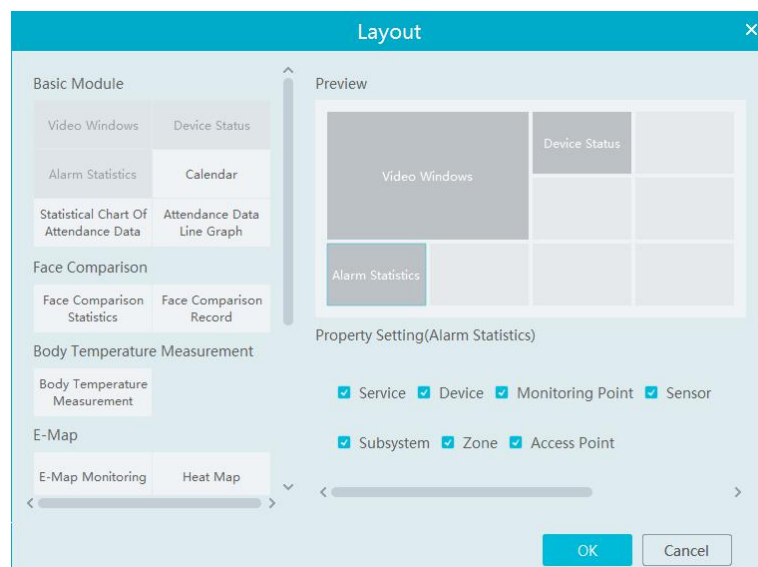
Device Type	Server Name	IP Address	Port	Client Connection Status	Authentication Server Connection Sta...	Edit
Encoding Device (Online/Total number:59/7)	Intelligent Server	10.214.200.200	6069	Online	Online	
Decoder (Online/Total number:0/5)						
Alarm Host (Online/Total number:0/1)						
Access Control System (Online/Total number:0/1)						
LED Display Device (Online/Total number:0/1)						
Intelligent Analysis Server (Online/Total number:1/1)						
Storage Server (Online/Total number:1/1)						

1.1 Create Intelligent Dashboard

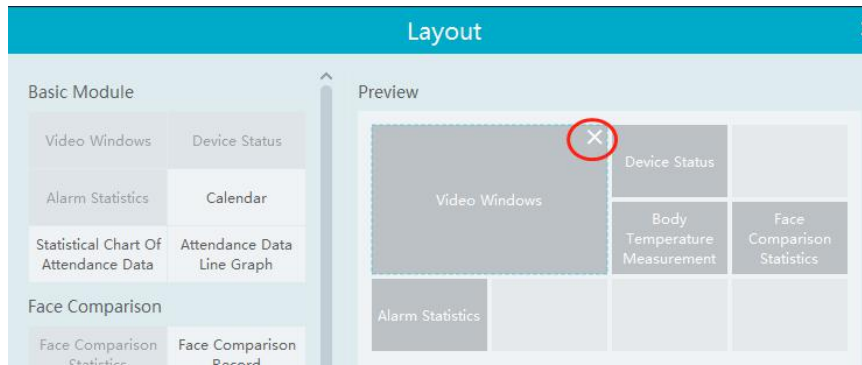
Go to Home → Intelligent Dashboard.






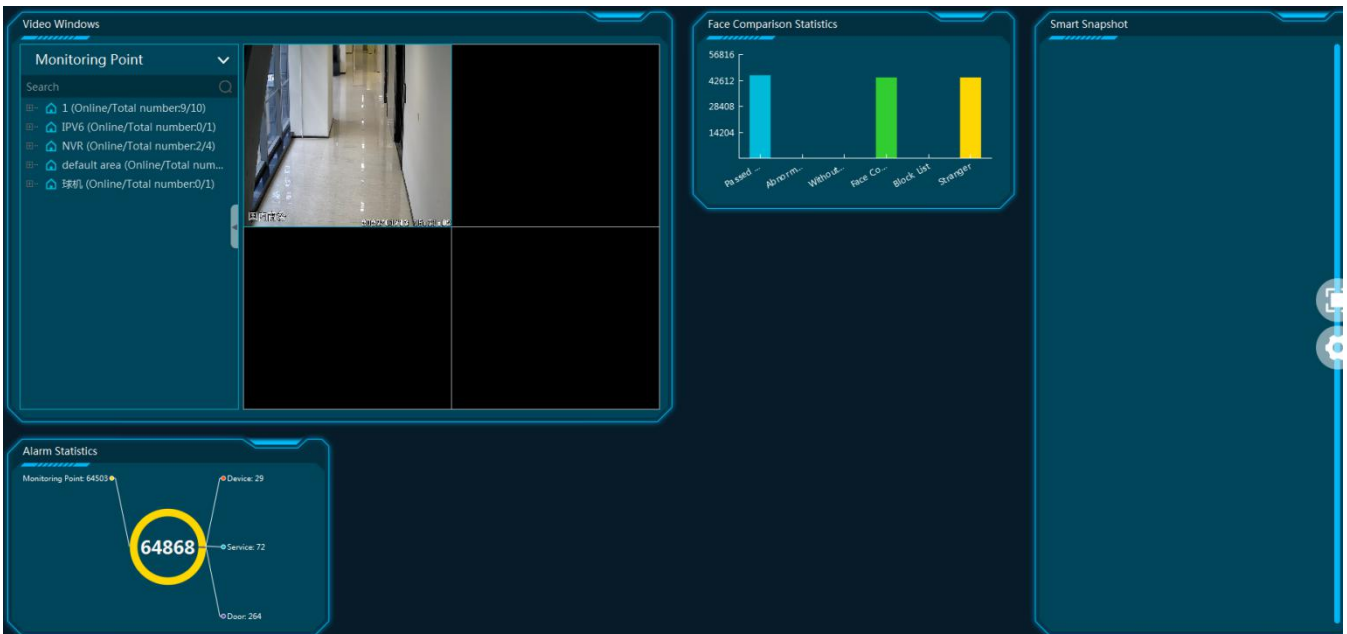
Click [Immediately Create] to create the layout of the data dashboard. Drag the module you want to display to the right preview window as needed. After that, click [OK] to save the settings.




Hover the cursor onto the module in the preview window and then you will see a deletion button (✕). Click it to remove the module from the preview window.

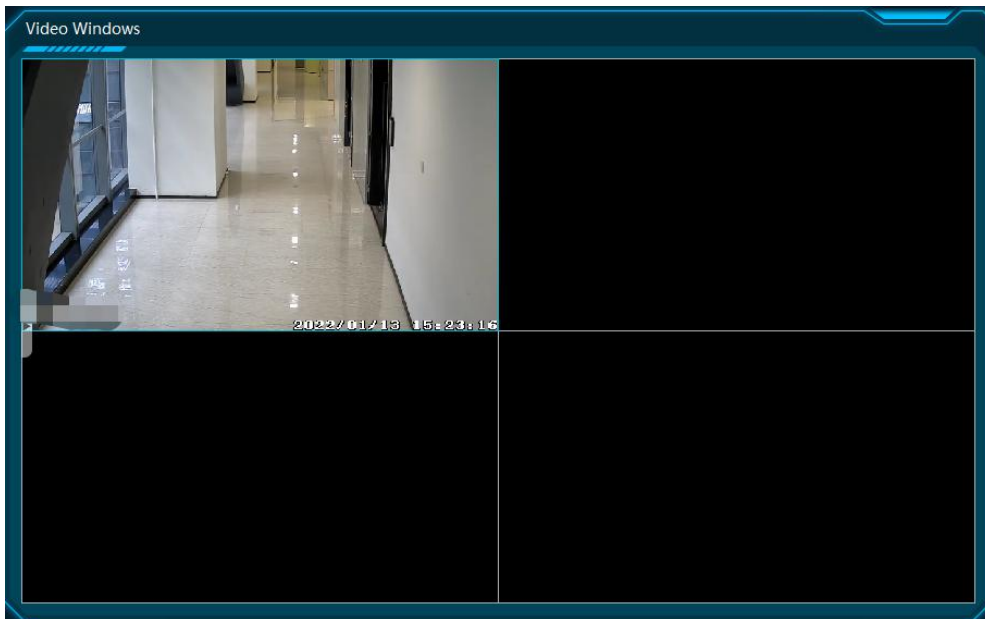


After the data dashboard is created, click  to display it in full screen mode. Click  or ESC to exit the full screen mode. Click  to set the layout of the dashboard.

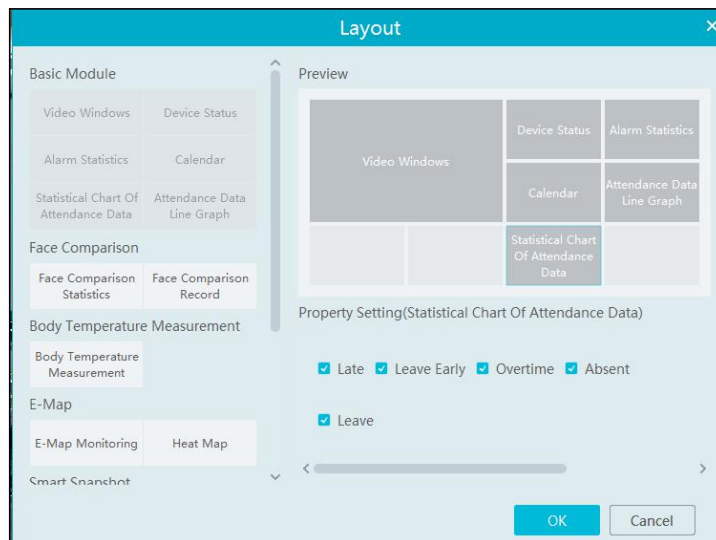


1.2 Basic Module

Video window supports 4-screen display mode. Click  to extend the monitoring points. Drag the camera to the preview window or double click the camera to play the video. You can drag the playing window to other windows.

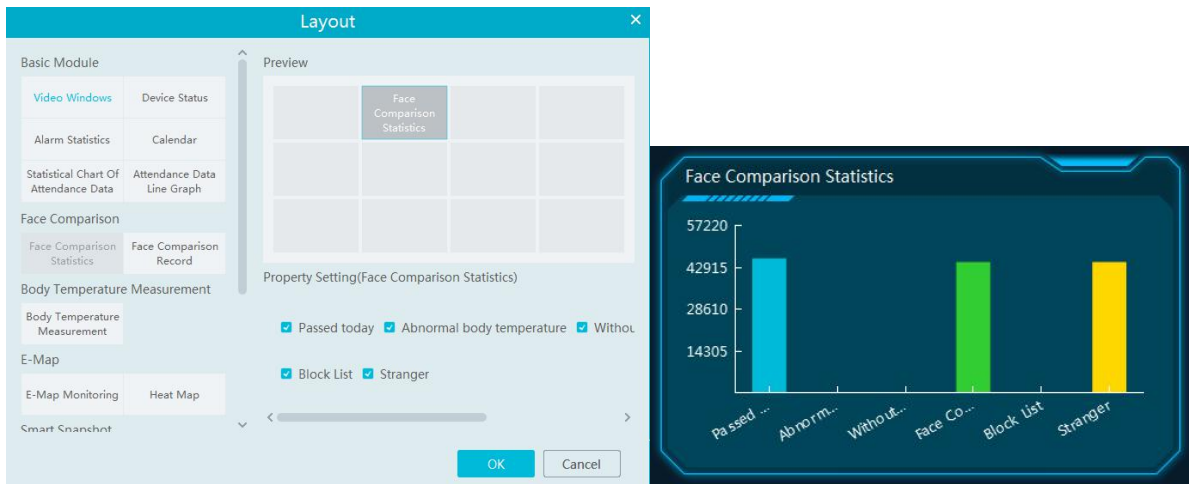


Other modules can set its attributes that you want to display as needed.



1.3 Face Comparison Display

Face Comparison display includes face comparison statistics and face comparison record display. In the layout interface, drag these two modules to the preview window. Then you can set the attributes as needed.



Smart Snapshot module: You can set the snapshot channel and attributes.

In the face comparison records, you can view the comparison similarity. Click to quickly skip to face comparison retrieval interface. Click to pop up the detail box. In this box, you can modify the personnel information; click to add this person to the face database.

The 'Face Comparison Record' window shows a list of records, each with a 'Stranger' label and a magnifying glass icon. The 'Verified Target Info(details)' window shows the following information:

Alarm Source: IP Camera Alarm Time: 2022-01-13 16:25:55

Name: Gender: Unknown

Birthdate: Lib Name:

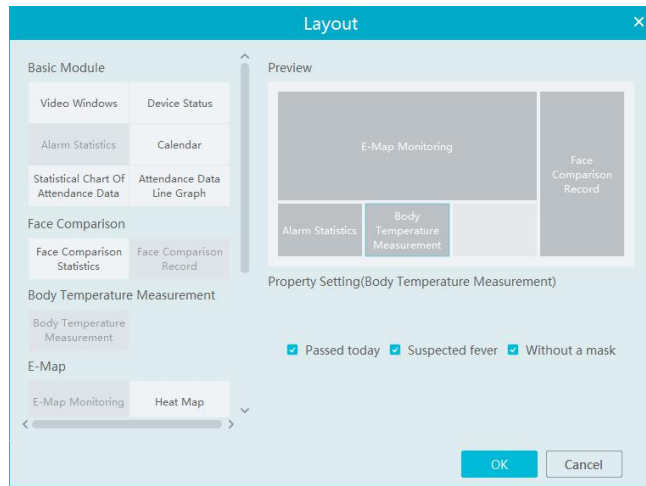
ID Type: ID Card ID No.:

Work ID:

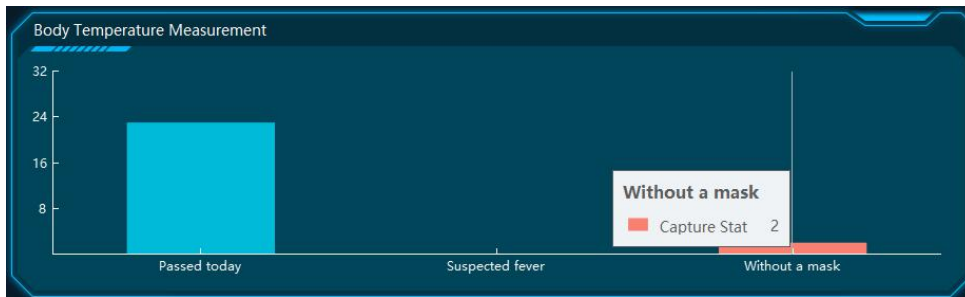
The 'Add to Group' window shows a 'Person List' with a search bar and a list of groups (VIP List, Visitor List, Block List). The 'Add to Group' form includes fields for Name, Gender (Male), Birthdate (2022-01-13), Province, City, Work ID, Telephone, ID Type (ID Card), Card Number, and ID No. Remarks:

1.4 Body Temperature Measurement Display

In the layout interface, select the body temperature module and then set the attributes you want to display as shown below.

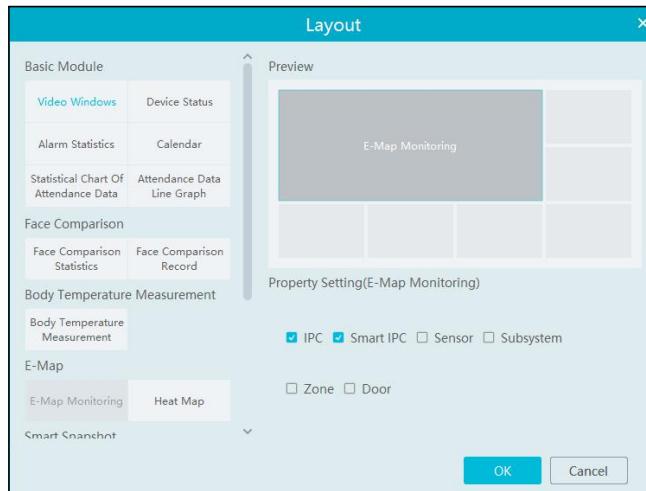


The body temperature measurement of the intelligent dashboard is shown as below.

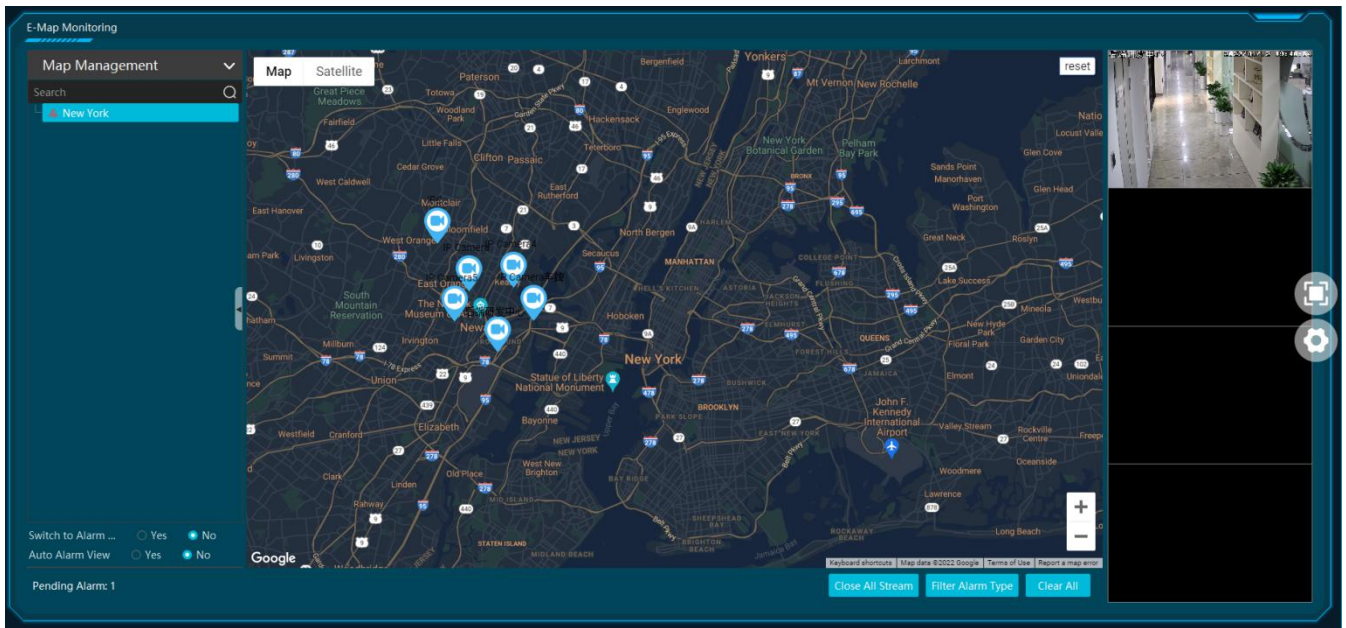


1.5 E-map Display

E-Map includes E-map monitoring and heat map analysis. The layout settings are as follows.

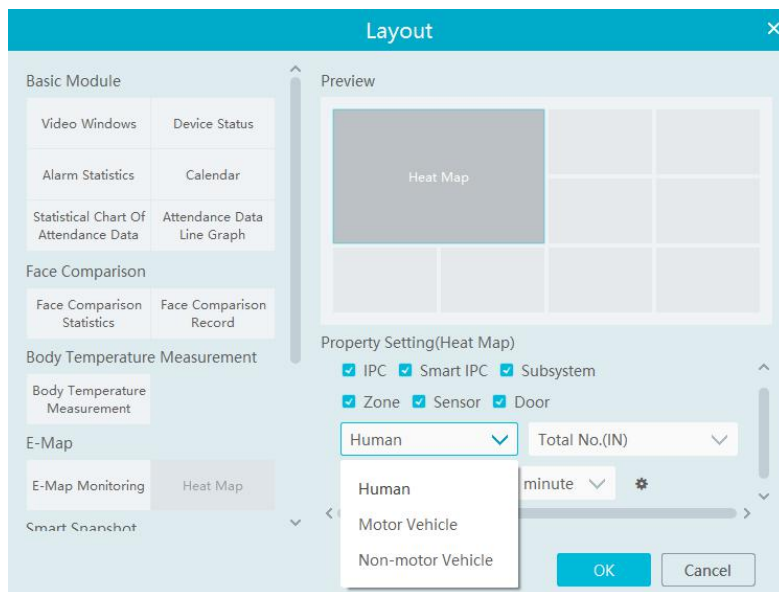


You need to set the hotspots in advance and then you can view here. Please refer to E-Map→ E-Map Monitoring for details.

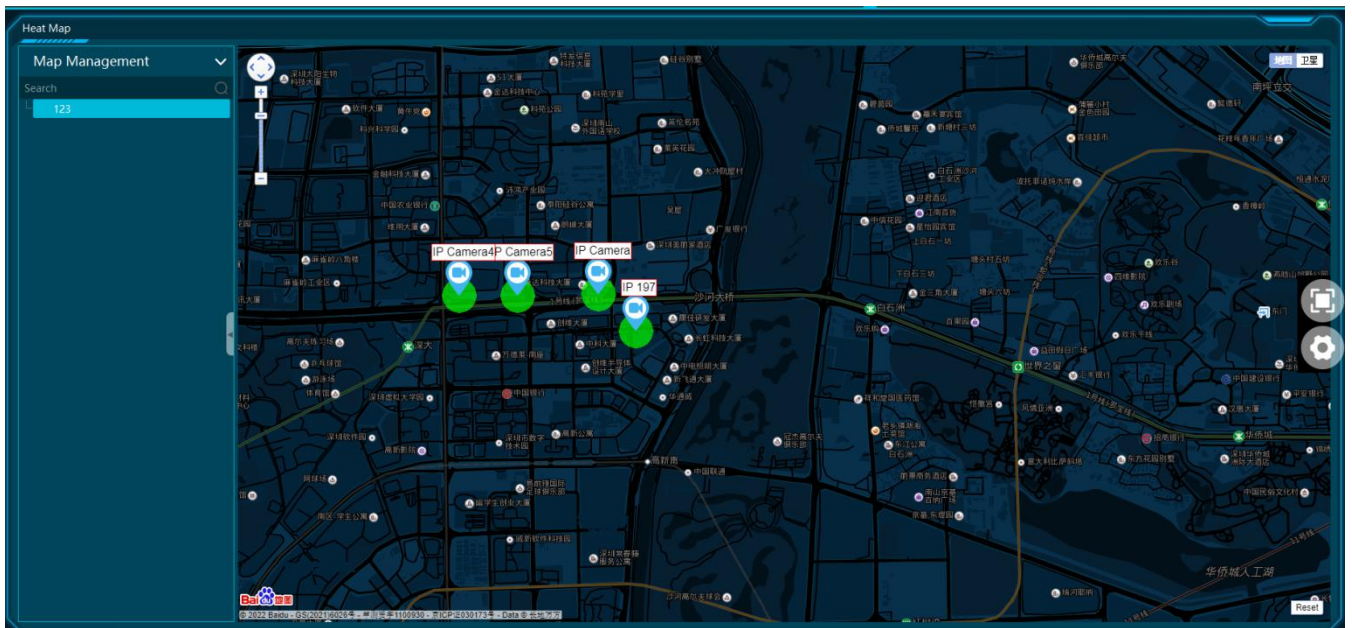


Heat map module: The more people/vehicles enter, the deeper the color is. Move the cursor on the monitoring point to view the current traffic flow. You need to set the E-map and hotspots in advance. Please refer to E-map settings chapter for details.

Besides the above hotspot setting, you can set other parameters as shown below.

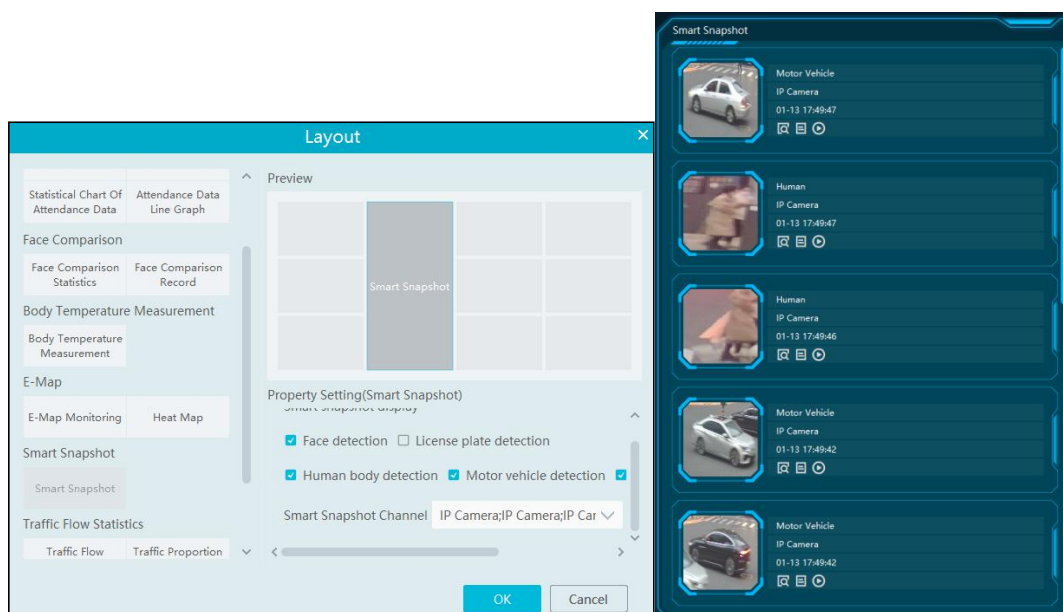


In the heat map module of the intelligent dashboard, you can view the statistics of human/motor-vehicle/non-motor vehicle.



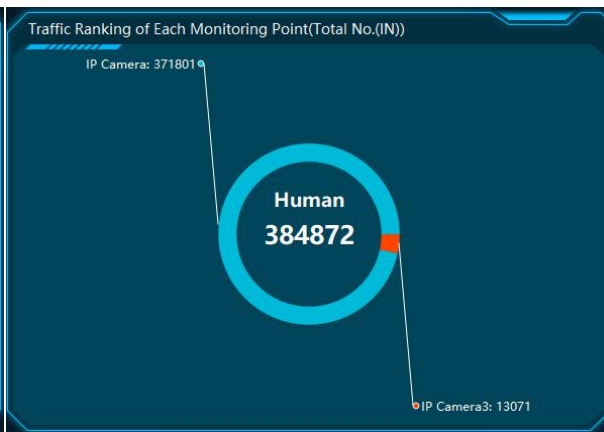
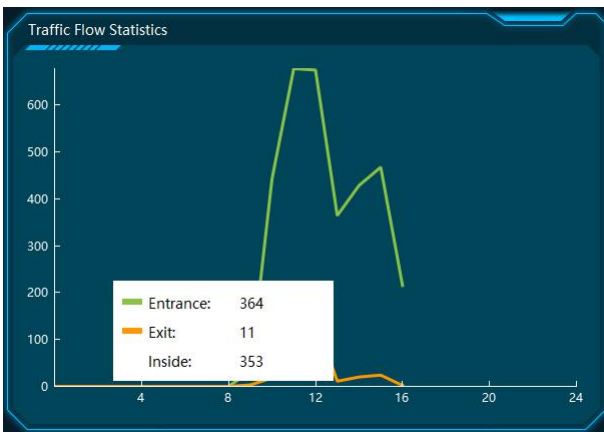
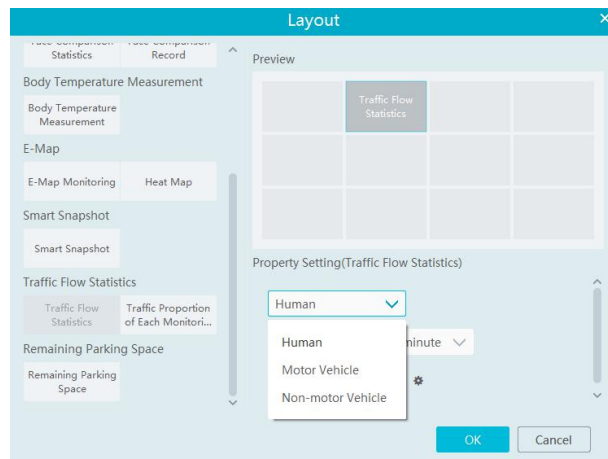
1.6 Smart Snapshot Display

You need to set the snapshot attributes in the layout interface and then the relevant data can be viewed on the dashboard. The smart snapshot type includes face, license plate, human body, motor vehicle and non-motor vehicle. Please select them as needed.



1.7 Traffic Flow Statistics Display

You need to set the statistical type, auto refreshing interval and channel in advance. Please refer to Target Counting → Task Management for details. Then set the layout of traffic statistics and display attributes.



1.8 Remaining Parking Space Display

Select the parking lot in the property area and then you can view the remaining parking lot here.

